

Downtown Links Project Update

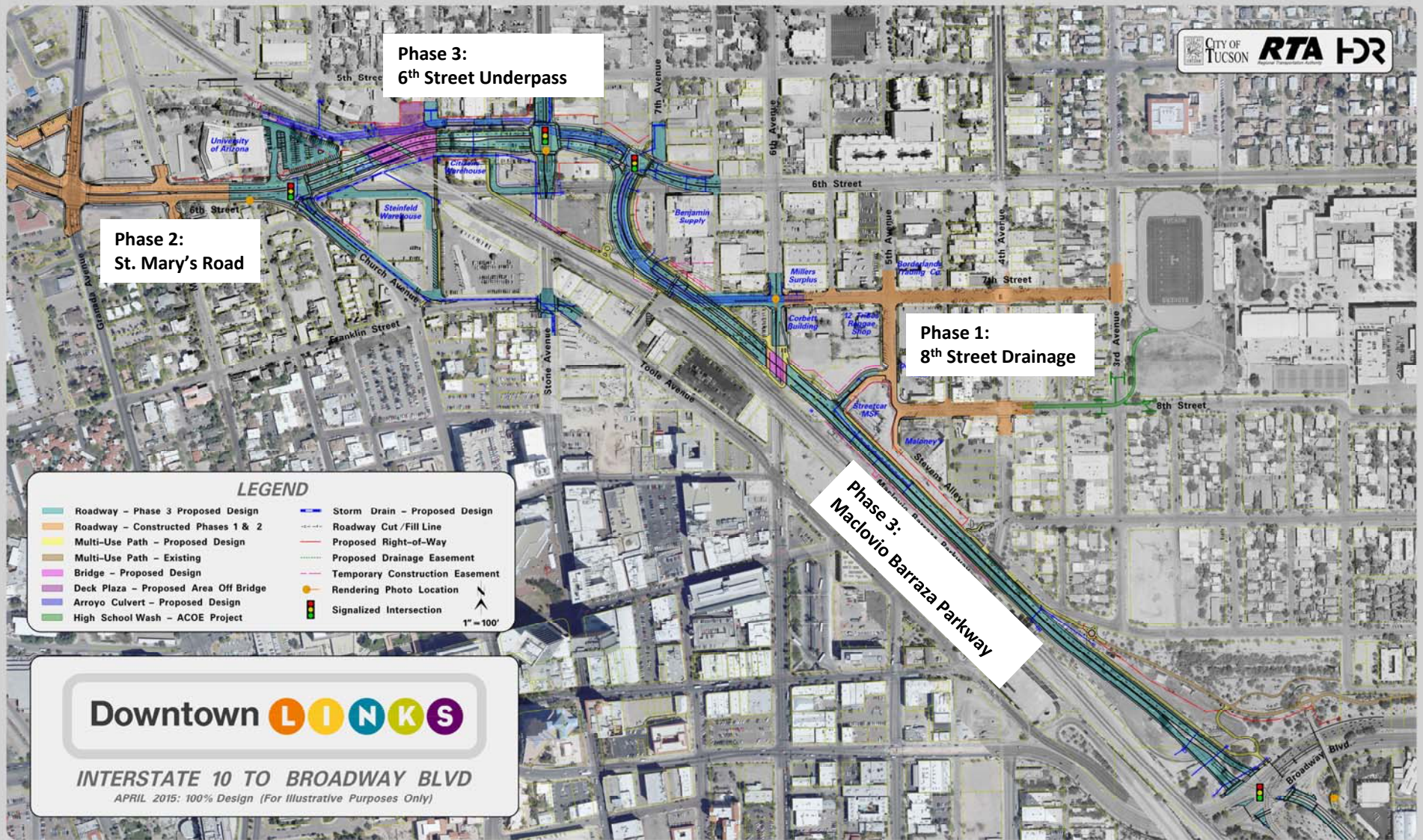
November 2016

Downtown **L I N K S**



Downtown Links Corridor Alignment

Approved by Mayor and Council in 2008



**Phase 3:
6th Street Underpass**

**Phase 2:
St. Mary's Road**

**Phase 1:
8th Street Drainage**

**Phase 3:
Maclavio Barraza Parkway**

LEGEND

Roadway - Phase 3 Proposed Design	Storm Drain - Proposed Design
Roadway - Constructed Phases 1 & 2	Roadway Cut/Fill Line
Multi-Use Path - Proposed Design	Proposed Right-of-Way
Multi-Use Path - Existing	Proposed Drainage Easement
Bridge - Proposed Design	Temporary Construction Easement
Deck Plaza - Proposed Area Off Bridge	Rendering Photo Location
Arroyo Culvert - Proposed Design	Signalized Intersection
High School Wash - ACOE Project	

1" = 100'

Downtown LINKS

INTERSTATE 10 TO BROADWAY BLVD

APRIL 2015: 100% Design (For Illustrative Purposes Only)

Project Scope

Scope for Design: (HDR Inc., and consultant team)

The project is in the 20-year RTA plan approved by voters in 2006 (includes \$76.1M).

A 1.3 mile long multi-modal roadway corridor linking I-10 and Broadway, along railroad.

- 4 vehicle lanes with medians and turn lanes
- On-street bike lanes, sidewalks, and separate multi-use path
- Major drainage improvements: New Tucson Arroyo culvert
- 6th Street Underpass at the Union Pacific Railroad
- Four rail-crossing upgrades to establish Quiet Zone eligibility
- Maclovio Barraza Parkway bridge over 6th Avenue
- 9th Avenue Deck Plaza with public space, landscaping, art
- Native desert landscaping and passive water harvesting
- Public art – 6 total artists for corridor
- 6th Avenue signal upgrade for two-way traffic



CITY OF
TUCSON

Department of
Transportation



Ongoing Issues



Traffic circulation/
bike & pedestrian
safety

45-50 trains each day
delays & fatalities



Industrial zone/
contaminants



Flooding and
emergencies

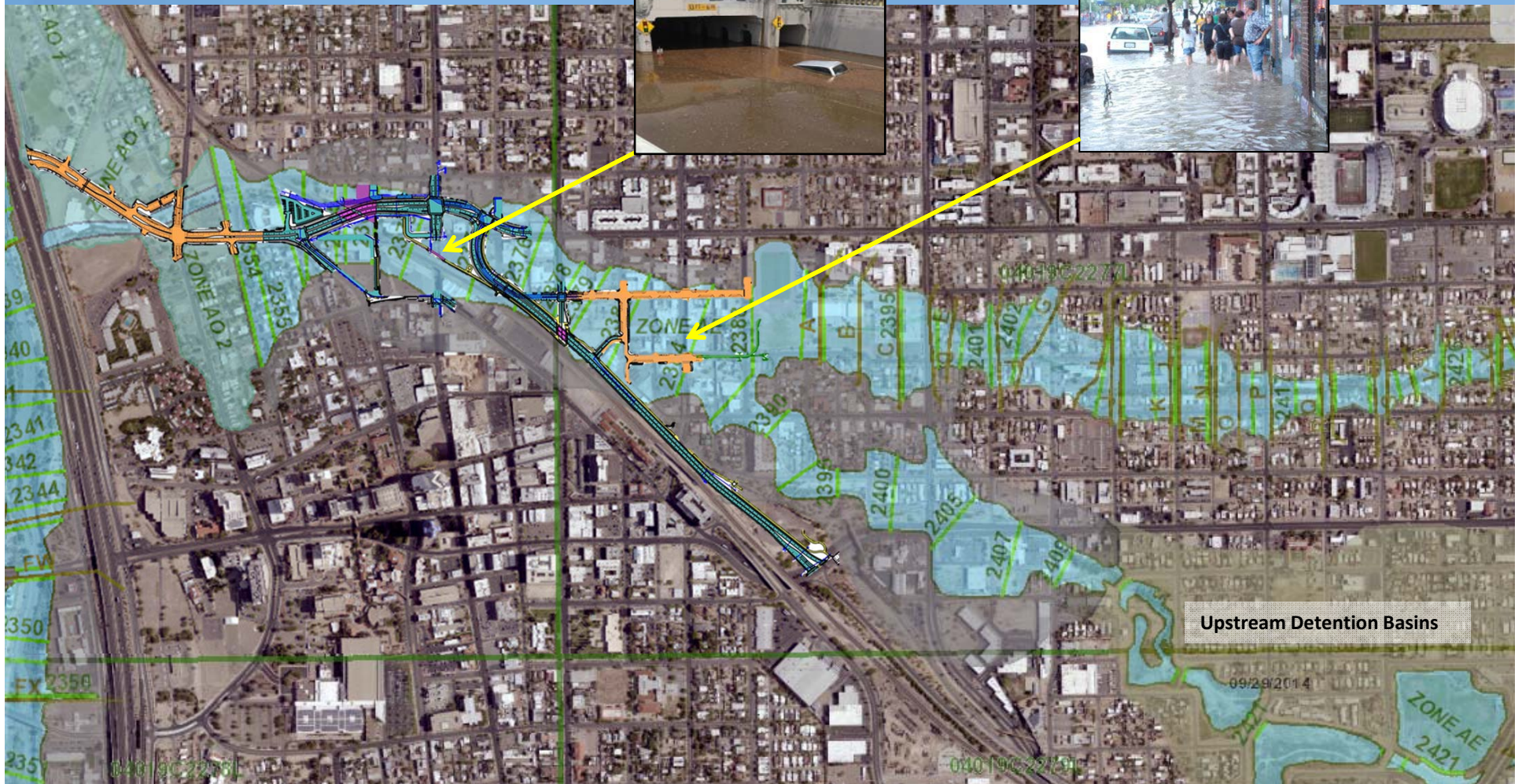


Current FEMA Floodplain

Stone Avenue - 2016



Fourth Avenue - 2007



Project Schedule

Phase I: 8th Street Drainage Improvements

- Completed in **May 2012**

Phase II: St. Mary's Road, from I-10 to Church Ave.

- Completed in **May 2014**

High School Wash Improvements (Army Corps of Engineers project)

- Managed by Pima County Flood Control District with Army Corps of Engineers
- Completed **April 2015**. FEMA floodplain map revisions have been completed

Phase III: Church Ave. to Broadway

- **2015:** Completed 100% Plans
- **2016:** Complete property acquisitions, demolitions, utility relocations
- **2017:** Begin major construction that will last 24-30 months



CITY OF
TUCSON

Department of
Transportation



Future 6th Street Underpass

Looking east from Church Ave. intersection



Rendering for illustrative purposes only



CITY OF
TUCSON

Department of
Transportation



Future Stone Ave. Bike/Ped Bridge

Looking south from future 6th Street intersection



Rendering for illustrative purposes only



CITY OF
TUCSON

Department of
Transportation



Future Bridge over 6th Avenue

Looking south from 7th Street



CITY OF
TUCSON

Department of
Transportation



Future Maclovio Barraza Parkway

Looking northwest from Broadway



Re-design in process to narrow the intersection. Working with PAG.

Rendering for illustrative purposes only



CITY OF
TUCSON

Department of
Transportation



More Information

Downtown Links website: www.downtownlinks.info

Sam Credio, TDOT Administrator
sam.credio@tucsonaz.gov

Tom Fisher, TDOT Project Manager
tom.fisher@tucsonaz.gov



CITY OF
TUCSON

Department of
Transportation

